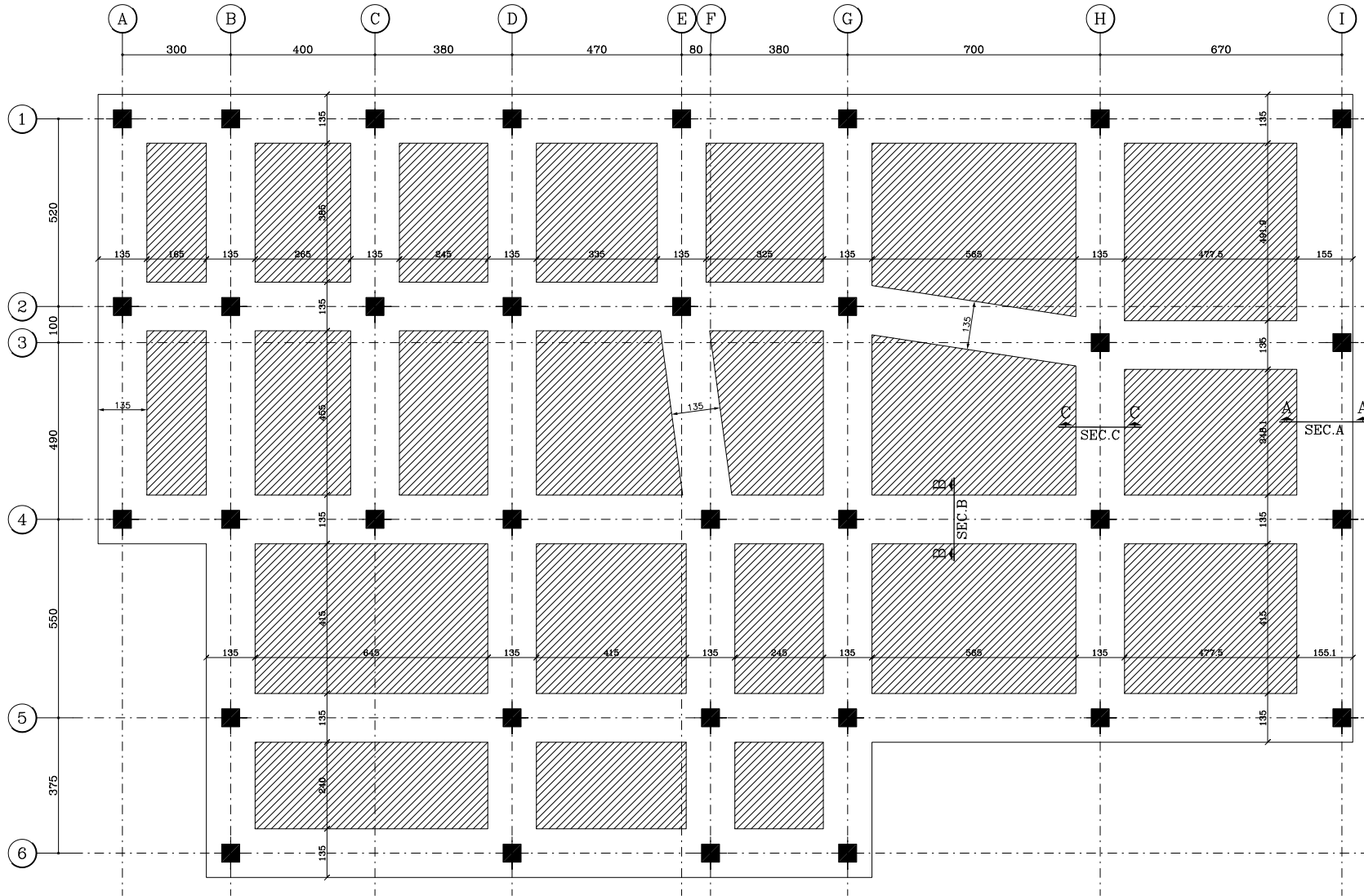


# FOUNDAMATE

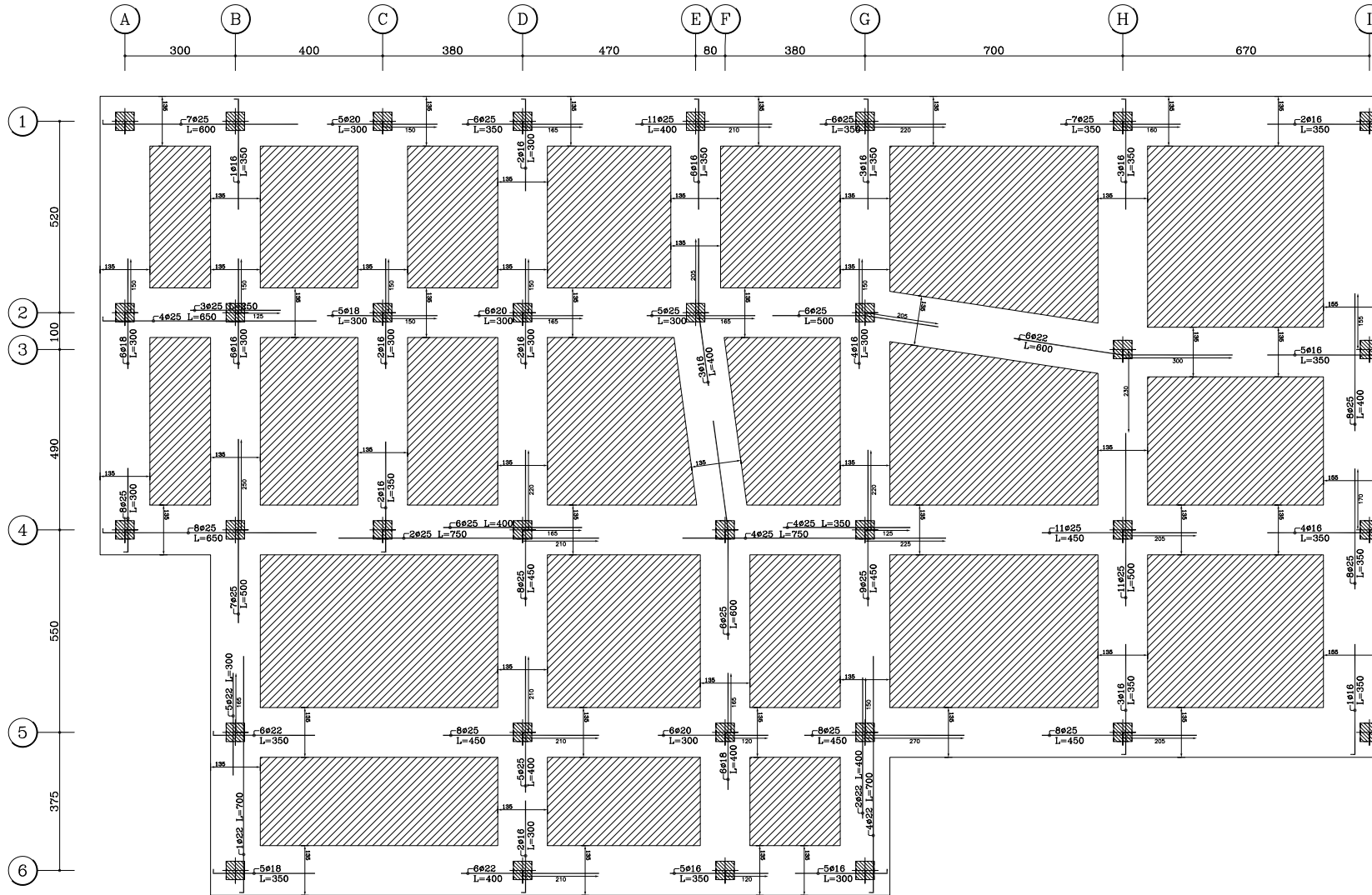
GENERAL DETAILS OF FOUNDATION



**■ DIMENSION DETAILS OF FOUNDATION PLAN**  
FOUNDATION DRAWINGS

# FOUNDAMATE

BOTTOM ADDITIONAL REBARS DETAILS PLAN

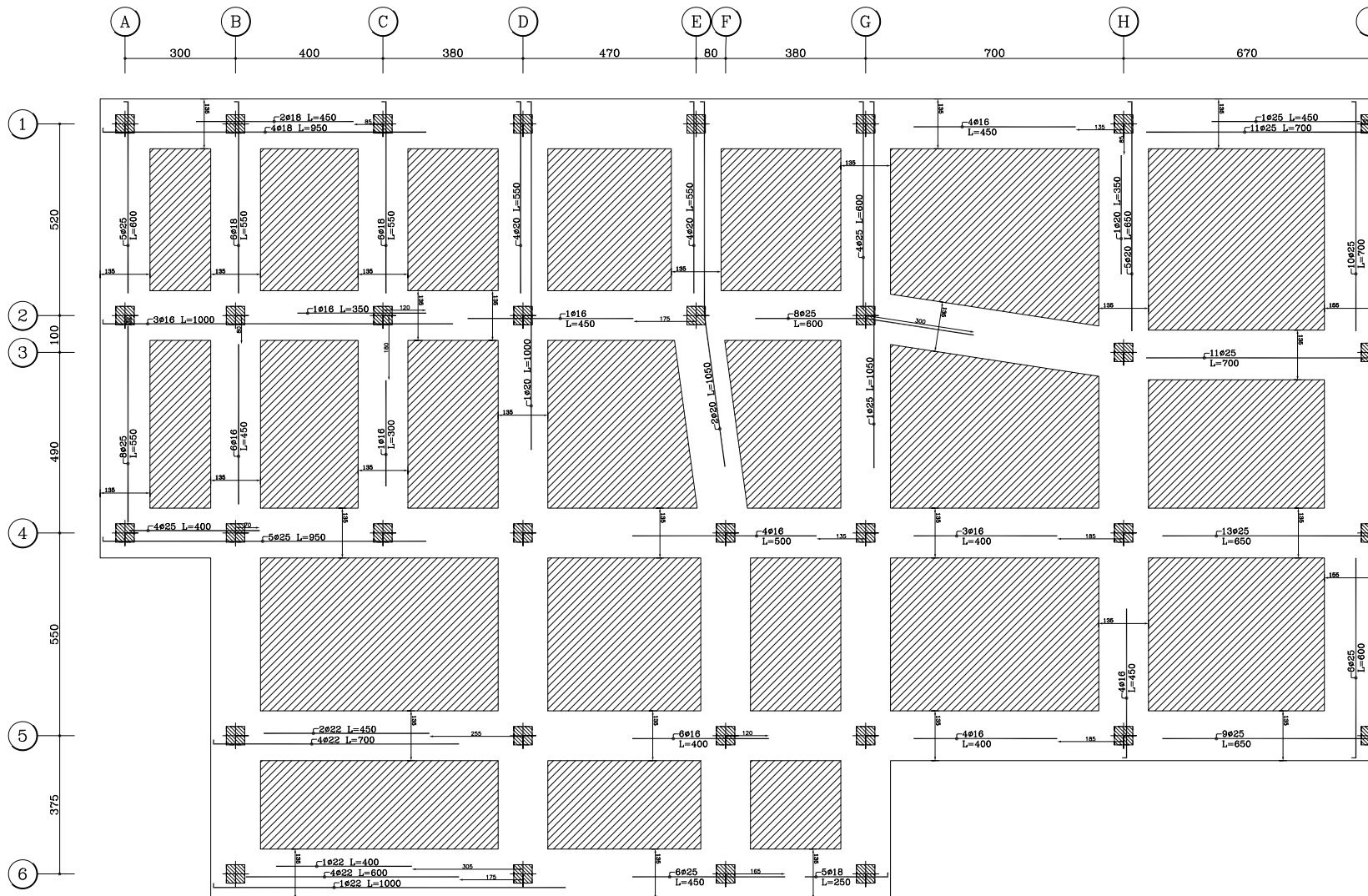


■ BOTTOM ADDITIONAL REBARS DETAILS PLAN

FOUNDATION DRAWINGS

# FOUNDAMATE

TOP ADDITIONAL REBARS DETAILS PLAN

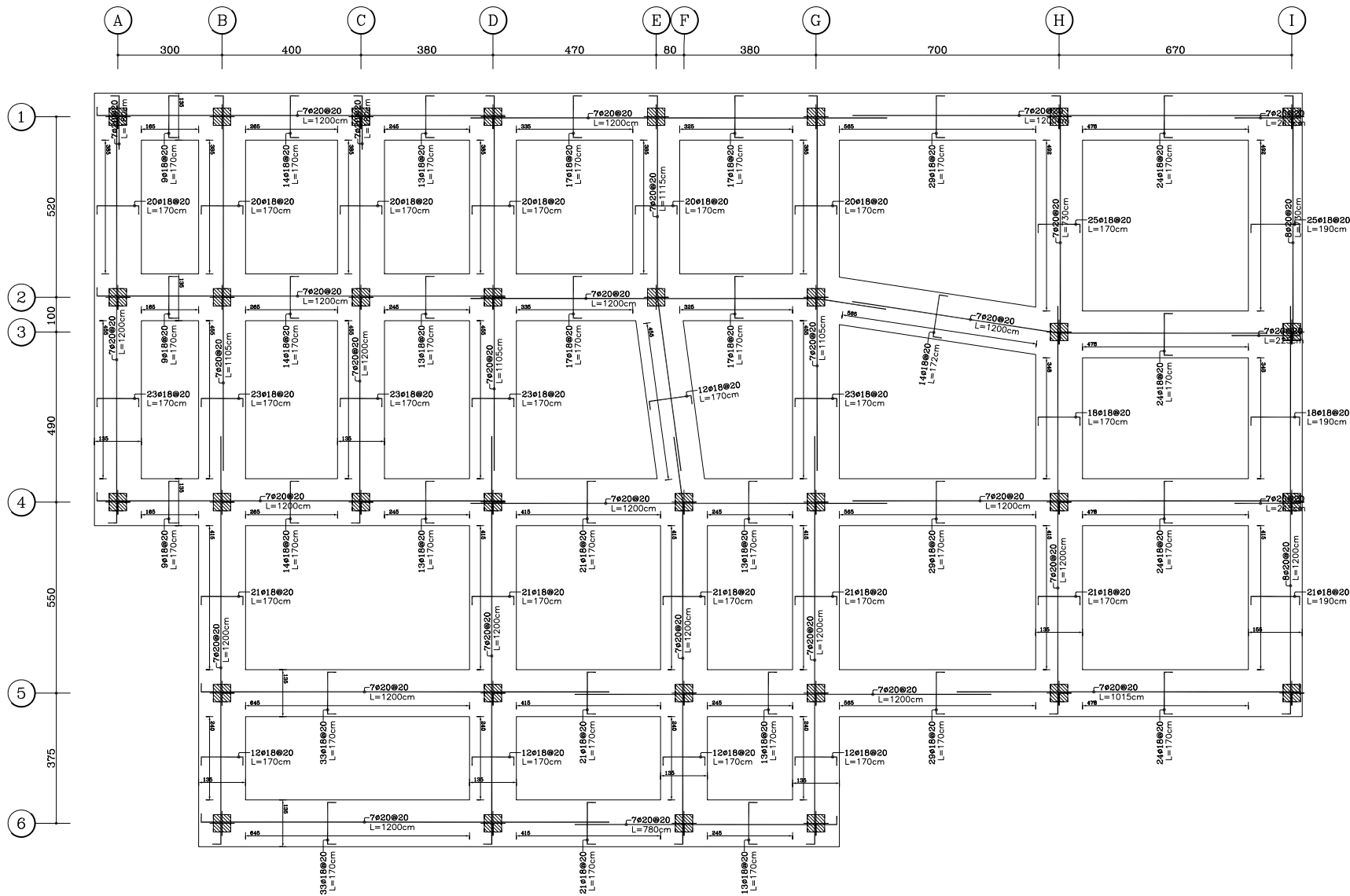


TOP ADDITIONAL REBARS DETAILS PLAN

FOUNDATION DRAWINGS

# FOUNDAMATE

BOTTOM TYPICAL REBARS DETAILS

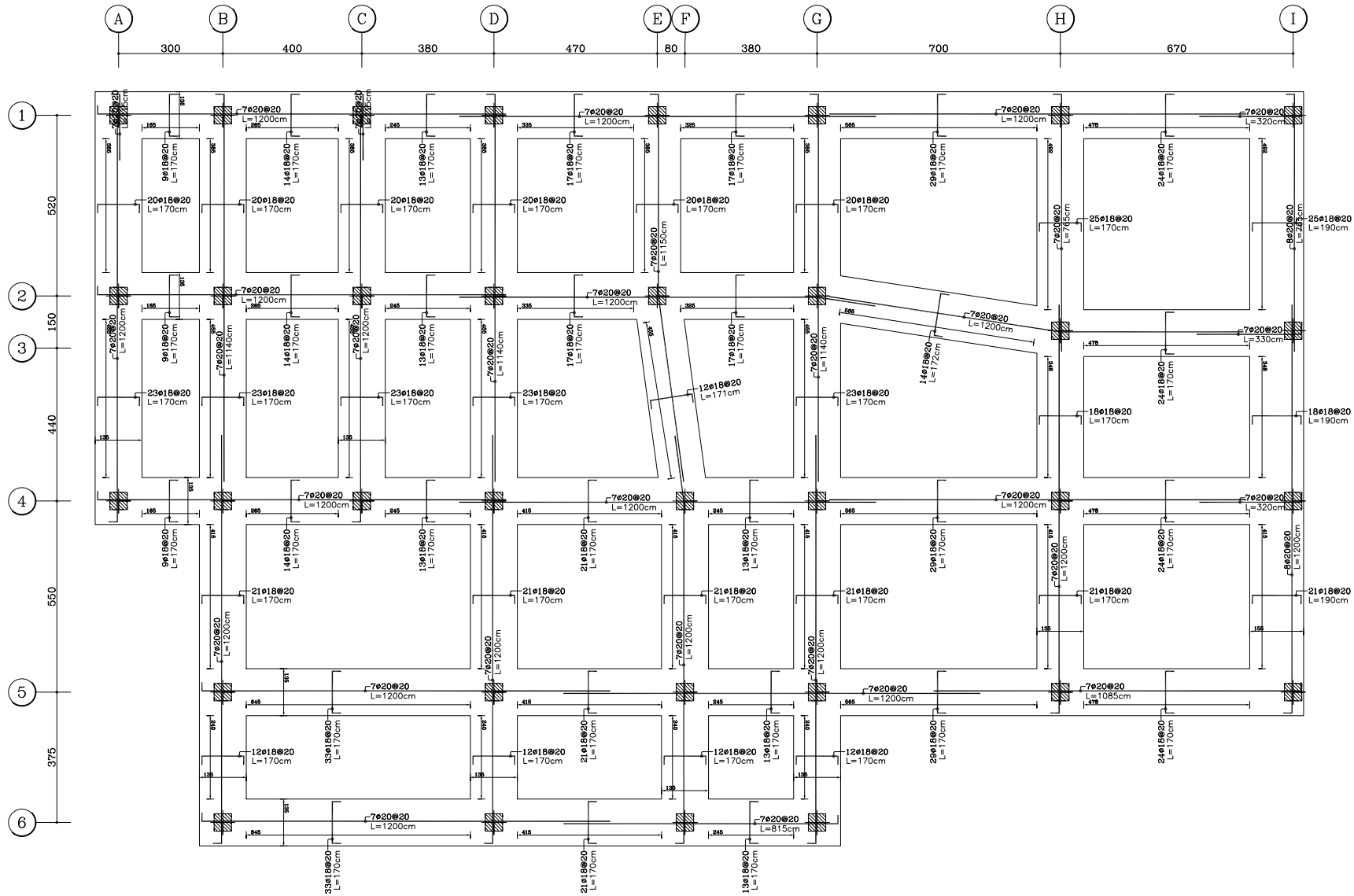


■ BOTTOM TYPICAL REBARS DETAILS PLAN

FOUNDATION DRAWINGS

# FOUNDAMATE

TOP TYPICAL REBARS DETAILS PLAN

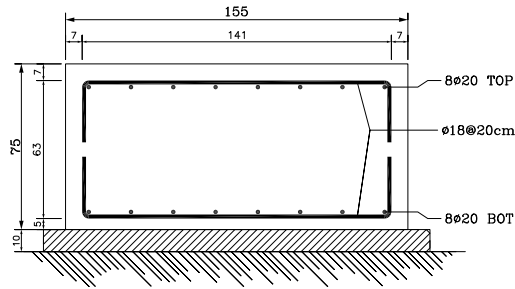


## TOP TYPICAL REBARS DETAILS PLAN

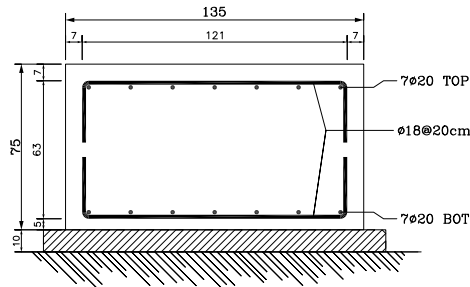
FOUNDATION DRAWINGS

# FOUNDAMATE

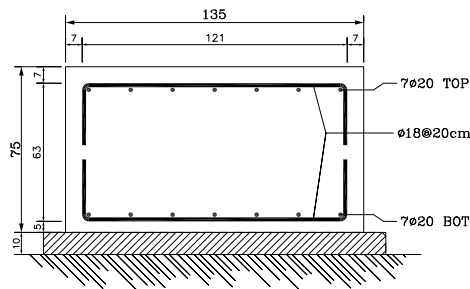
FOUNDATION SECTIONS DETAILS



■ FOUNDATION SECTION A



■ FOUNDATION SECTION B



■ FOUNDATION SECTION C

FOUNDAMATE » Foundation Rebars Listofer						
Position Number	Reabar Shape (schematic)	Dia. (mm)	Length (cm)	Weight (kg)	Number (pcs)	Weight Total (kg)
1f		ø25	600	23.1	22	508.6
2f		ø20	300	7.4	17	125.8
3f		ø25	350	13.5	33	445.1
4f		ø25	400	15.4	28	431.6
5f		ø16	350	5.5	30	165.7
6f		ø25	650	25	34	851.6
7f		ø25	750	28.9	6	173.4
8f		ø25	250	9.6	7	67.4
9f		ø25	450	17.3	59	1023.1
10f		ø18	350	7	5	35
11f		ø22	400	11.9	7	83.6
12f		ø16	250	3.9	5	19.7
13f		ø16	300	4.7	9	42.6
14f		ø22	350	10.4	6	62.7
15f		ø18	300	6	17	101.9
16f		ø25	300	11.6	5	57.8
17f		ø25	500	19.3	24	462.4
18f		ø22	600	17.9	10	179
19f		ø25	300	11.6	8	92.5
20f		ø22	700	20.9	9	188
21f		ø22	300	9	7	62.7
22f		ø16	300	4.7	15	71
23f		ø25	600	23.1	14	323.7
24f		ø16	400	6.3	16	101
25f		ø18	950	19	4	75.9
26f		ø18	450	9	2	18
27f		ø16	450	7.1	11	78.1
28f		ø25	700	27	32	863.2
29f		ø25	950	36.6	5	183
30f		ø16	500	7.9	4	31.6
31f		ø22	1000	29.8	1	29.8
32f		ø18	250	5	5	25
33f		ø22	450	13.4	2	26.9
34f		ø16	1000	15.8	3	47.4
35f		ø16	350	5.5	1	5.5
36f		ø25	550	21.2	8	169.5
37f		ø18	550	11	12	131.8
Foundation Rebars Summation Values					3067	26376 kg

FOUNDAMATE » Foundation Rebars Summary Report				
Rebar Size	Diameter (mm)	Length (m)	12m Bar Number	Weight (kg)
ø16	16	374.5	31	591
ø18	18	3783.6	315	7558
ø20	20	4825.7	402	11901
ø22	22	212	18	633
ø25	25	1477.5	123	5693
Foundation Rebars Total Weigth = 26376 kg (26.376 ton)				

Plot Pen Assignment Table		
Index	Color Name	Lineweight
2	● Yellow	— 0.09
7	● White	— 0.09
255	○ Black	— 0.09
1	● Red	— 0.05
3	● Green	— 0.05
4	● Cyan	— 0.05
6	● Magenta	— 0.05
8	● 8 (Gray)	— 0.05
Other	○ Other Color	— 0.05
Note: Use Monochrome Plot Style with above settings for printing total of the drawings.		

Overlap Length Table for Foundation Rebars in cm										
According to Rebar Position, Rebar Size and Properties of (f'c=210 Kg/cm², fy=4200 Kg/cm²)										
Rebar Size	ø10	ø12	ø14	ø16	ø18	ø20	ø22	ø25	ø28	ø32
Foundation TOP	70	80	95	110	120	135	185	210	240	270
Foundation BOT	50	60	70	80	90	100	145	160	180	205